

Annual Report 2002

Charles River Watershed Association

What can be more impressive than to look up a noble river just at evening, one, perchance, which you have never explored, and behold its placid waters reflecting the woods and sky, lapsing inaudibly toward the ocean; to behold it as a lake but to know it as a river, tempting the beholder to explore it and his own destiny at once.

*Henry David Thoreau's journal
July 9, 1851*

High and dry?



If you've been reading *Streamer*, or you've heard CRWA staffers speak, or you've been watching flow in the Charles, or you live in one of the many communities suffering endemic water bans, you know we're running out of potable water because we've engineered our communities to treat rainfall like trash. We capture it, pollute it, and throw it down stormdrains as quickly as possible causing myriad environmental troubles. If you've been following along with us, you also know that within this decade the situation is likely to get pretty dire for us and the environment, and you know that the traditional "solutions" to these problems will make things better for us and much worse for the environment.

At CRWA, there is no question about what we should do. On every front -- regulatory, the science of restoration, infrastructure design, and general advocacy -- we are leading the effort to repair what is so badly broken.

We are working hard to understand the problem and its roots. After all, in the northeast we get forty-five inches of rainfall a year; we should have enough water to meet human demands *and* protect the environment. The question is how.

We are experimenting with a concept we created called "flow-trading." The idea is to encourage pollution dischargers to put water back into the ground, thereby

increasing river flow. In exchange, pollution dischargers would not have to remove as much pollution as they would have had to originally, because there would be more river water in which the pollution would be diluted. A first look suggests they could save money, and the environment would benefit from greater aquifer sustainability, sustained flows in tributaries and the Charles, and reductions in stormwater pollution and erosion from flooding.

We created and continue to tweak SmartStorm™, our rainwater collection system for homes and small commercial buildings. Our installations in Bellingham taught us a great deal about our systems and their effectiveness. SmartStorm™ reduces residential demand for water for landscaping and gardening at the same time that it helps put more water back in the ground. It will be ready for prime-time in March of 2003. If you are interested, check it out at www.charlesriver.org.

On behalf of our sister organization,

the Ipswich River Watershed Association (IRWA) and ten citizens, we sent the Massachusetts Department of Environmental Protection notice of our intent to sue the Department for violations of the Water Management Act. The Ipswich River has *no* water in it for much of every summer due to demands for water supply. CRWA has joined with IRWA to enforce the Act and protect the river. Permits in the Upper Charles are due to be reviewed in 2004, and a good outcome on the Ipswich will help us do a better job for the Charles.

In a unique collaboration with the Environmental League of Massachusetts and the National Wildlife Federation, CRWA is reviewing state water regulations to determine where they fall short and then will work to tighten or change them.

An investment in CRWA is an investment in the water future of the Charles River and all the

communities it touches. It is an investment in innovation. It is an investment in restoring our environment, and teaching the lessons we learn here to the rest of the urban centers in the nation.

"We're running out of water because we've engineered our communities to treat rainfall like trash. We capture it, pollute it and throw it down stormdrains as quickly as possible, causing myriad environmental troubles."



"YOU make CRWA strong and effective."

*Did you know?
President Kelly
McClintock has
led the Board
of Directors
since 1998.*

As the President of your Board of Directors, I like to think I understand CRWA's programs and what we are trying to achieve. Nevertheless, when our internal discussions on achieving a healthy river focus in on calibrating computer models; when I consider that our work restoring reliable stream flows relies heavily on our TMDL analyses; or when we decide that our efforts to achieve environmentally sensitive growth and development require preparing a business plan for our own products, I am impressed and sobered: impressed with the extraordinary competence of CRWA's staff and the complexity of the strategies we are pursuing to achieve our goals; and sobered by how hard it must be for you, our members, to understand what we are doing!

So this Annual Report is for you. Let us highlight here the key programs we are pursuing, introduce the superb technical staff that makes it possible, and clarify just how we are benefiting you and the Charles River.

We are proud of the results. CRWA is THE national leader in watershed protection. Our computer modeling techniques, our pioneering work in environmentally sensitive zoning, our approaches to keeping water local, and other innovations are widely admired and copied. Christine Todd Whitman, EPA National Administrator, enthuses in Washington about the Charles River Model of watershed protection.

But I want to return to the title of this

message—YOU make us strong!—and write for a moment about money.

CRWA may have the largest staff of any watershed association in the country, but our effectiveness is not achieved by the number of people working on the Charles' problems; quality is what counts!

Quality, and the strength it gives to CRWA, is not cheap. Our budget is well over \$1 million. And as so many non-profit organizations have found, the past two years have been a challenge financially. We have seen major cutbacks in our government contracts supporting the science that underlies our programs; many foundations have also pulled back, or redirected their priorities.

But unlike many of these non-profit organizations, CRWA has come through these two years stronger than ever, with no layoffs, additional technical support, and more powerful programs.

A large portion of the credit goes to you, our members. Let me give you just two numbers that tell it all and are supremely important to us: in our fiscal year 2000, you gave us operating support (unrestricted dues and contributions) of about \$184,000. In fiscal 2002, you gave us over \$391,000. In just two years, your sup-



CRWA President Kelly McClintock and Executive Director Bob Zimmerman

port more than doubled! (The financial report later in this Annual Report suggests an even higher amount, but that includes various corporate and restricted contributions.) Without your commitment and generosity, CRWA would be far weaker today, and the Charles River more vulnerable.

And so I say thank you, and I hope this Annual Report helps you understand that your dues are being well spent!

*Kelly McClintock
President*

CRWA Works To Protect Public Trust Lands



*Did you know?
Emerald Necklace
designer
Frederick Law
Olmsted also
founded the long-
running magazine
"The Nation."*

CRWA has long been concerned with the deteriorating condition of the metropolitan park system and the lack of open public discourse, accountability, and transparency in decision-making about this public asset. We have embarked on a number of projects in the past year to change the way this parkland is managed and to promote its preservation, improvement and maintenance.

One area in which we focused our attention was the growing number of conversions of Metropolitan District Commission (MDC) parkland to other uses. In Massachusetts, publicly held open space is protected under the State Constitution. These public trust lands cannot be disposed of, leased or changed to other uses without legislative approval. In practice, however, this protection has proven hollow: bills seeking to dispose of public lands are routinely passed by the legislature.

Recognizing the need to strengthen the protection of public trust lands,

CRWA selected Boston University's (BU) proposed legislation to lease 1.5 acres of the Charles River Esplanade for a new sailing pavilion as an important test case. The location was prime Esplanade parkland and the amount of

"A sound decision-making process that is responsive to the public and that uses stewardship as the basis for staffing, funding and management decisions is key to the preservation of the metropolitan park system."

land was far in excess of that needed to accommodate a new building. Our goals were four-fold: (1) to establish the paramount importance of the public interest in decisions concerning dispositions of Article 97 lands; (2) to make an independent analysis of alternative locations central in such decisions; (3) to provide a process for public review and comment; and (4) to begin to change the MDC's decision-making process and improve its public accountability.

Leading a broad coalition, CRWA succeeded in establishing important precedents about how decisions to dispose of public lands should be made.

We forced BU's project into the state environmental review process and commissioned an independent study of site alternatives that not only established public trust criteria, but also showed that other locations were far superior for protecting the public's interest. State Environmental Affairs Secretary Bob Durand agreed with us and effectively removed BU's preferred site from further consideration.

A sound decision-making process that is responsive to the public and that uses stewardship as the basis for staffing, funding, and management decisions is key to the preservation of the metropolitan park system.

The lessons we learned from the BU experience have proven extremely useful as we have begun to expand our involvement in parkland issues this year. CRWA has been actively involved in three exciting and important parkland projects: the Muddy River Restoration Project; the Memorial Drive Demonstration Project; and the development of the New Charles River Basin Parks. While each of these projects is different in scope and detail, CRWA has consistently brought to the table an important focus on the requirements of good public stewardship, including a demand for accountability and transparency in park management.

Pollution. How much is too much? How much can each polluter discharge? The Charles River Watershed Association (CRWA) is the only watershed association to be taking a prominent role in answering these questions.

States, including Massachusetts, are required by the Federal Clean Water Act to answer these questions when public health and aquatic life are threatened by water pollution. States must develop and adopt Total Daily Maximum Loads (TMDLs) for all "impaired" waters. If a water body is too polluted to support its designated use (such as swimming or fishing), it is impaired. According to Massachusetts Department of Environmental Protection (DEP), there are 75 river miles (98% of the river's mainstem), 20 lakes and ponds, and 14 tributaries in the Charles River watershed that are "impaired" and do not support their designated uses. The most serious pollution problems are phosphorus, nitrogen, pathogens, low dissolved oxygen, and priority organics. Noxious aquatic plants are also a problem on the lakes and ponds.

CRWA is preparing TMDLs for the Charles River watershed with U.S. Environmental Protection Agency (EPA) and DEP. CRWA's lead position puts us at the cutting edge of river science and ahead of most other environmental organizations. We are expanding our technical

capabilities, assisting the state and federal governments, and will have a key role in answering the questions posed above. Development of the TMDLs involves an intensive, multi-year effort of

oxygen in the river.

The data being collected will be used to configure a computer model that will answer questions like: how much pollution is in the river? From where does it come? How much better would water quality be if a particular practice or discharge were changed?

Limiting River Pollution

•In the field with
CRWA Projects Director
Kathy Baskin•

detailed monitoring of water quality, measurements of river flow, computer modeling of flow and pollutant levels, and close coordination

with watershed communities. CRWA has been out in both rain and shine, collecting water samples and taking measurements at 31 locations. We have installed meters and are measuring flow in nine tributaries. We have been out before daybreak measuring levels of dissolved

CRWA's work "will provide a legal basis for DEP and EPA to tighten the limits on permitted discharges of stormwater and treated wastewater."

How much does each discharger have to cut back for the river to no longer be impaired?

TMDLs on the Charles will provide a legal basis for DEP and EPA to tighten the limits on permitted discharges of stormwater and treated wastewater. In cases where the pollutants are not regulated and, therefore, are not required to have a permit (such as the application of fertilizers and pesticides), public support will be essential in achieving reductions in pollutant discharges. The task ahead is enormous and CRWA is up to it. 💧



*Did you know?
There are 33 lakes and ponds in the Charles River watershed, and most of them are man-made.*

Restoring Our Watershed's Ecosystem

When CRWA collects water quality data for the month, the information is not simply used by our organization. It is also used by federal and state regulators, municipalities, businesses, universities, and the general public to assess the progress of their clean up efforts, to monitor water quality trends along the length of the river, and to signal problematic polluted areas. Besides water quality measurements, CRWA has begun to take an in-depth look at other indicators for monitoring the river's ecological health, including the riverine (in-stream) and riparian (land abutting the river) habitats and fish community of the Charles River and its tributaries. With partial funding from the Massachusetts Environmental Trust, CRWA is assessing river habitat conditions and the current fish species of the Charles River watershed.

While we understand human dependency on water resources, we are embarking on these initiatives to establish the interconnected relationship between the watershed environment and organisms. In the past year, CRWA received training on how to conduct habitat assessments from the United States Geological Survey (USGS) and has, so far, conducted over 30 assessments throughout the watershed. Preliminary results from the habitat assessments have provided quantitative

and qualitative data of habitat conditions over different seasons and flow levels. Concurrently, CRWA assisted USGS in determining the minimum streamflows at the most critical riverine habitat areas.

In addition, CRWA is working with the Massachusetts Division of Fisheries and Wildlife to determine the current types and abundance of fish species in the river. Upon completion of fish sampling and additional habitat assessments at the end of 2003, CRWA will bring all of this information together and compare current environmental conditions to historical records of the Charles River and healthy watersheds in southern New England. This will further our understanding

"While we understand human dependency on water resources, we are embarking on these initiatives to establish the interconnected relationship between the watershed environment and organisms."

of how water quality and flow of the river impact aquatic habitat and fisheries. Although we cannot undo most of the human growth and development in our watershed to restore it back to historical conditions, knowledge of the river's current ecosystem health and the interconnected relationship of the river to all living organisms will help shape the development and advocacy of environmentally-sound policies for restoring the watershed to a viable, healthy ecosystem. 💧



*Did you know?
The Charles drops just 450 feet over its entire length.*

•a Charles River habitat report by Project Engineer Anna Eleria•

A Water

WATER QUALITY MONITORING

Trained by CRWA staff, over 80 dedicated volunteers helped us complete our seventh full year of monthly water quality monitoring along the entire length of the Charles. The U.S. Environmental Protection Agency uses the data for its annual Charles River report card. The data also guides the decisions of organizations and environmental agencies responsible for control of illicit stormwater and combined sewer overflows, and illegal discharges of untreated sewage to the river.

EARTH DAY CLEANUP

On April 20th 1,200 volunteers participated in the 3rd Annual Charles River Earth Day Cleanup sponsored by CRWA, Massachusetts Community Water Watch, Senator Steven Tolman's office and the Charles River Stream Team, with support from the Clean Charles Coalition and the Metropolitan District Commission. Participants removed over 2,000 bags of trash and debris from the riverbanks.

COLOR-CODED FLAGS

Boaters on the Charles River Basin benefited from CRWA's fifth summer of signaling water quality conditions with color-coded flags. Red flags warn boaters of dangerous bacteria levels while blue flags signal suitable conditions. Flags were hoisted at nine boathouses and reported on CRWA's website and hotline, as well as in local newspapers.

RUN OF THE CHARLES CANOE AND KAYAK RACE

CRWA hosted the nation's largest canoe and kayak race. The spirit of our work protecting and enhancing the Charles River was evident in the determined faces of nearly 1,600 paddlers who entered the 20th Anniversary Run of the Charles. In spite of cold, raw winds and up to $\frac{3}{4}$ - inches of constant rain, the event showcased the public's and our members' appreciation for the river as an essential recreational resource.

WATER CONSERVATION

CRWA introduced SmartStorm™ Rainwater Collection System and successfully installed several pilot projects of this innovative way to recycle rainwater from rooftops. CRWA has been working with several communities who want to use the system to reduce stormwater flooding and decrease reliance on over-tapped water supplies.

PARKLAND PROTECTION

CRWA led a coalition of neighborhood and environmental groups concerned with

Now in its 37th year, **Charles River Watch** provides **national leadership** in water quality and continues as the **leading voice** for water quality and recreational enjoyment of the Charles. **CRWA** provides **advocacy, science-based stewardship** and **CRWA** finds **solutions** to protect water quality and river habitat. These are a few of the accomplishments of which **we are most proud**.

1600 ...1600 Run of the Charles participants

1200 ...1200 Earth Day Clean-up volunteers

20 ...20th Anniversary

1700 ...1700 tests performed...

shed Year

Watershed Association
watershed management,
for the health, beauty
Charles River. Through
ship and research,
water resources, wildlife
the **accomplishments**
proud.

ddlers...

30 water monitoring volunteers...

species of fish residing in the Charles River and to develop a list of those species that should be found in a river like the Charles, but are not because of dams, low flows, and other restrictions.

POLLUTION CONTROL

CRWA has made significant progress in the Total Maximum Daily Load (TMDL) project. The major goal of the project is to determine the allowable amount of pollutants discharged to the river and how much each discharger should be allowed to contribute. CRWA has begun measurement of flow, water quality, and bathymetry to support this project.

ADVOCACY

CRWA reviewed and commented on 38 Environmental Notification Forms and Environmental Impact Reports on everything from power plants to apartment and housing developments to wastewater treatment plants, proposed drinking water wells, pollutant discharge permits and industrial and shopping complexes.

CRWA sits on the Historic Parkways Initiative Steering Committee which is working to revitalize historic parkways

iversary of the Run of the Charles...

throughout Massachusetts. We have focused particular attention on the Memorial Drive Demonstration Project. This project will bring significant changes and improvements to the section of Memorial Drive between the Longfellow Bridge and the Boston University Bridge, including the removal of one travel lane and some parking changes. Our involvement has ensured the project's continued attention to stormwater management infrastructure and long term maintenance in addition to the great increases in open space and improved pathways and landscaping.

CRWA also serves on an advisory committee to restore the

the proposed site for Boston University's (BU) new sailing pavilion. CRWA commissioned an independent analysis of BU's proposed site which determined that it would adversely impact the public's interests. In a major victory for the protection of parklands, State Environmental Secretary Bob Durand rejected BU's preferred site.

HABITAT

CRWA completed habitat assessment of several locations in the watershed impacted by low flow. Additionally, CRWA is working with the Massachusetts Division of Fish and Wildlife to inventory

Muddy River and the Emerald Necklace. The first phase of this project, to dredge a portion of the Muddy River near Charlesbank just before it flows into the Charles, will begin this fall. Subsequent phases, which will include significant dredging throughout the Muddy River, bank stabilization and parkland restoration, are undergoing permit review. There has been significant public involvement in the project, with CRWA and others insisting that a project of this magnitude must include major stormwater management to slow the re-sedimentation of the river. CRWA has also pressed for strict monitoring of water quality, especially during dredging, to ensure that the Charles is protected from dredge spoils and suspended solids.

BOND BILL

As a member of the Coalition for the Environmental Bond Bill, CRWA worked hard to ensure its passage. We wrote letters to all legislators in the watershed and met with some key members to explain the importance of this critical funding for state environmental programs and new initiatives.

LABORATORY ANALYSES

CRWA's certified lab performed 1700 tests on samples for pollutants such as fecal coliform bacteria, total phosphorus, total suspended solids, nitrates, and chlorides, and began testing for e. coli bacteria this year. The CRWA lab continued to educate interns, and tested 23 samples for a Northeastern University

project on the Muddy River for Biochemical Oxygen Demand.

The Town of Medway received

37 fecal coliform tests for the Choate Park recreational area, and the lab continued to participate as a regional lab in the Acid Rain Monitoring Program based out of the Water Resources Research Center at University of Massachusetts at Amherst.


COALITION BUILDING

Over the past year, we have run samples for the Ipswich River Watershed Association, and completed the legal work to develop the case behind a Notice of Intent to Sue the Massachusetts Department of Environmental Protection on their behalf. We created the New England Watershed Consortium, a group of a dozen sophisticated watershed organizations with whom we reviewed and tested our environmental zoning methodology in a pilot project in Littleton, Massachusetts. To accomplish the task, we provided them with equipment, software, and training.

We formed a coalition of environmental and parkland groups to take on Boston University and its proposed sailing pavilion in the heart of the Esplanade. The coalition included the Esplanade Association and Conservation Law Foundation, as well as the Alliance of Boston Neighborhoods, Bay State Road Civic Association, Beacon Hill Civic Association, Charles

River Conservancy, Environmental League of Massachusetts, BU

Environmental Students Organization, Boston Greenspace Alliance, Massachusetts Audubon Society, and Neighborhood Association of Back Bay. Not only did we cause the pavilion to be moved, we set important precedents for future dispositions of public land across the Commonwealth.

We're working with River Network of Portland, Oregon, to introduce many of our more innovative concepts, like environmental zoning and products like SmartStorm, across the nation. And they're making a difference. 

This year's accomplishments were compiled by Kathy Baskin, Jim Fitzgerald, Louise Taylor and Bob Zimmerman.

*Did you know?
The size of the
CRWA staff has
increased
sevenfold since
the early 1990's.*

board of directors

2002 - 2003

Kelly McClintock
President

Philip L. Hillman
Vice President
Polaroid Corporation

William J. Tedoldi
Treasurer
proVENTURE Business
Group, Inc.

Edward E. Watts, III.
Assistant Treasurer
Peabody & Arnold

Jane Sender
Clerk
Jane Sender Legal Search

Ralph W. Abele
Past President
U.S. Environmental
Protection Agency (EPA)

Lee P. Breckenridge
Northeastern University
School of Law

David Burmaster
Alceon Corporation

Steven H. Burrington
Conservation Law
Foundation

Lucy Caldwell-Stair
Longwood Information

John P. DeVillars
Brownfields Recovery Corp.

Edward Englander
Englander & Chicoine P.C.

Elizabeth C. Gilmore
The Global Habitat Project

Richard G. Gönci
Magnet Communications

James Healy
Boston Duck Tours

Jonathan D. Katz

Virginia M. Lawrence
NESCAUM

Elizabeth Levin

Mindy S. Lubber
The Lubber Group

Charles D. McCrea
Environmental Careers
Organization

Brian O'Donovan

John G. Palfrey, Jr.
Berkman Center for Internet
& Society, Harvard Law
School

William D. Rieders
Parthenon Group

Robert F. Sproull
Sun Microsystems

You've seen their names in *Streamer*. You've met them at Annual Meetings and on sampling days. These are the people who make the work of CRWA significant and effective.



Margaret Van Deusen, Esq., Deputy Director and General Counsel, BA, Mount Holyoke College, JD, New York University School of Law. A former public defender, Assistant Attorney General in the Environmental

Protection Division, and partner at Rubin and Rudman in Boston, Ms. Van Deusen directs CRWA's advocacy work, provides general legal representation, provides legal support to other environmental organizations, and aides in general staff management. Member: Massachusetts Bar, U.S. District Court for Massachusetts, U.S. Court of Appeals for the First Circuit, MWRA Water Supply Citizens Advisory Committee, Emerald Necklace Citizens Advisory Committee.



Kathy Baskin, PE, Projects Director, BS, Biology and BSCE, Civil Engineering, Tufts University; MS, Environmental Engineering, Tufts University. Formerly a project engineer with Metcalf & Eddy, Ms. Baskin has directed most of CRWA's technical projects since 1995.

Among them are CRWA's Integrated Monitoring, Modeling and Management Project (IM3, 1995-1999), fish and habitat studies, and pollution loading studies. Member: American Society of Civil Engineers, Boston Society of Civil Engineers, Water Environment Federation, New England Water Environment Association, EPA Task Force 2005, MassDEP Stormwater Advisory Committee and NPDES Advisory Committee, EOEA Charles River Basin Team, Belmont Conservation Commission, Environmental League of Massachusetts Board of Directors.



Nigel Pickering, PE, Senior Engineer and Project Manager, BS, Agricultural Engineering, University of Natal, South Africa; MS, PhD, Agricultural Engineering, Cornell University.

Prior to joining CRWA, a soil and water engineering consultant in Gainesville, Florida, Ithaca, New York, and Maracaibo, Venezuela, Dr. Pickering is CRWA's computer modeling and mapping expert. His work assesses impacts to the Charles, both to surface water bodies and groundwater. He has also done extensive design and modeling work for CRWA's SmartStorm™ rainwater retention system. Dr. Pickering has authored or co-authored numerous technical papers and publications. Member: American Society of Agricultural Engineers, American Geophysical Union, MassGIS Advisory Committee.



Denise Trapani Hall, Director of Development, BA, Philosophy, Boston College; MBA, Finance, Boston University. Formerly the Director of Development at DeCordova Museum and Sculpture Park and Vice

President of Development at the Children's Museum, and CRWA's newest employee, Ms. Trapani Hall is responsible for planning and coordinating all of CRWA's fundraising efforts. Member: Adjunct Faculty, Boston University, Association of Fundraising Professionals, Peer Reviewer, Institute of Museum and Library Services.



Dudley Bonsal, Environmental Scientist, BA, English, Tufts University; Biology, Environmental Science, Programming, Harvard Extension School. Formerly a teacher, paralegal, and

community newspaper editor, Mr. Bonsal operates CRWA's computer geographic information systems, and conducts flow, chemistry, and habitat analyses of the Charles and its tributaries. He reviews and comments on major developments in the watershed, and assists in the CRWA laboratory. He also analyzes federal, state, and local permits and practices throughout the watershed.



Kate Bowditch, Senior Environmental Scientist and Project Manager, BA, English, Cornell University; MA, Geography/Water Resources Management, Boston University.

An hydrologist by training, Ms. Bowditch has taught secondary school in Kiganjo, Kenya. She currently directs CRWA's parkland projects and SmartStorm™ development work. Member: Muddy River Oversight Committee (Chair), Brookline Conservation Commission, Emerald Necklace Restoration Citizens Advisory Committee, Massachusetts Water Resources Commission Low Flow Task Force and Wastewater Task Force.



John Carney, Environmental Scientist, BS, MS, Geology, Kent State University. Formerly a consultant and field assistant with the EPA, Mr. Carney monitors the Charles and its tributaries

for flow, water and sediment quality, habitat and biota. Additionally, he models hydrologic and water quality conditions and reviews development projects throughout the watershed.



Ariel Dekovic, Office and Publications Manager, BA, Environmental Studies and Political Science, Vassar College. After working as a design editor at Vassar and as an educator on the Hudson River Sloop Clearwater, Ms. Dekovic joined the CRWA staff in September. She is responsible for the layout of our newsletter, *Streamer*, and our other publications including this Annual Report, and as well as managing the CRWA office.



Ken Dews, Finance Manager, BS, Business Management, Northeastern University; MS, Environmental Administration, Antioch New England Graduate School. Formerly with the Bank of New England

and the Merrimack River Watershed Council, Mr. Dews manages all of CRWA's finances. Additionally, he aids in field studies and with the development of SmartStorm™. Director: Chelmsford Land Conservation Trust.



Anna Eleria, Project Engineer and Environmental Scientist, BS, Natural Resources and Environmental Science, University of Minnesota; MS, Water Resources Engineering, Tufts University. Ms. Eleria

joined CRWA as an intern in 1996, followed by a stint in Senegal in the Peace Corps. She currently manages the Charles River Fisheries Assessment Project, managed the Low Flow

and Habitat Assessment of the Charles River Fisheries Assessment Project, is the lead engineer on a CRWA assessment of stormwater best management practices, and was the founder and remains an organizer of the Charles River Earth Day Clean Up, an annual event that brings 1200 volunteers to aid in cleaning the Charles every April.



Jim Fitzgerald, Laboratory Manager, BS, Earth Science, Framingham State College; Management Certificate, Boston University School of

Management, and additional coursework in chemistry and microbiology. Formerly a senior chemist and supervisor with Clean Harbors Environmental Services, Mr. Fitzgerald joined CRWA to construct and then operate and manage our water analysis laboratory. He also aids in the design and implementation of CRWA's watershed technical work, including SmartStorm™. The CRWA lab commonly processes nearly 2000 water tests each year, many for sister watershed associations. In cooperation with Brandeis University, Mr. Fitzgerald trains lab and volunteer interns.



Peg Savage, Environmental Scientist, BA, Geology, Lafayette College; MS, Geology, University of Georgia. Ms. Savage joined CRWA in 1996. She currently

coordinates all CRWA water quality monitoring volunteers, creates our monitoring training manuals for both volunteers and staff professionals, and develops our quality assurance project plans for submittal to the EPA and MassDEP. She additionally assists in water quality and flow monitoring, and coordinates the flagging program which notifies the public of current water quality conditions in the Lower Basin.



Louise Taylor, Membership Manager, MEd, Antioch University, MFA, Creative Writing, Goddard College. Ms. Taylor is the author of four books, including *Dogs and*

Their Women (Little Brown, 1989). She currently manages all aspects of CRWA's membership, including direct mail appeals, our annual fund, donor events, renewals, and the Annual Report.



Bob Zimmerman, Executive Director, BA, English and History, MA, English, Central Michigan University. Formerly a high school and college teacher, Mr. Zimmerman founded the

National Sports Academy at Lake Placid in 1979, where he served as the school's headmaster through 1990. He joined CRWA as Executive Director in January 1991. Under his direction, CRWA has initiated groundbreaking ecosystem analyses and land-planning studies, helped rewrite land and water regulation, developed restorative technologies, and won major battles over the Big Dig Charles River Crossing, Charles River parkland, and water and wastewater impacts. Member: Massachusetts Water Resources Commission, MIT Sea Grant College Program State and Industry Advisory Committee, Earth Share New England Board of Directors and Past President, Earth Share of American Board of Directors, MassDEP Fees and Programs Advisory Committee, Littleton Board of Health.

PEOPLE WHO HELP MAKE IT HAPPEN

ON THE CHARLES

The work highlighted in this report is made possible through the generous support of more than 5000 CRWA donors and volunteers. We regret that space limits us from listing all our members here, but we extend our deep appreciation to everyone who contributed to CRWA in the fiscal year ending September 30, 2002. Many thanks to employers who match their employees' gifts or who participate in a work-place-giving program.

MILLENNIUM SOCIETY (\$2,500 OR MORE)

Anonymous (3)
Mr. & Mrs. John C. Bloom
Sierra Bright
Lucy Caldwell Stair
Bea & Woolsey Conover
Richard S. Emmet, Jr.
Miss Elizabeth B. Jackson
Bruce & Helen Johnstone
Kahn Charitable Foundation
Beedee & Ted Ladd
Kelly McClintock
James & Patricia Poitras
Robert D. Rands
Inga Siegel
Larry & Carol Strasburger

HEADWATERS SOCIETY (\$1,000 - \$2,499)

Anonymous (1)
Mrs. Charles F. Adams
Mrs. Jeannette McC. Atkinson
Barbara H. Austin
James C. Beck
Mr. & Mrs. William L. Bennett
Mr. & Mrs. Rodrigo Botero
Stephen Burrington & Abigail Swaine
The Honorable & Mrs. Levin H. Campbell
Mr. & Mrs. Alfred Chandler
Sheila Gamble Cook
Anne & Jim Davis
Mr. & Mrs. George P. Edmonds, Jr.
Bonnie & Jay Emmons
Jerome & Emily Farnsworth
William Fitz
Richard S. Forte
Elizabeth Gilmore
Larry R. Gottesdiener
Margot C. Pyle
Belle L. Halpern & Mitch Rosenberg
Elisabeth Harper & David Persampieri
Mr. & Mrs. Sturtevant Hobbs
Carolyn & John King
Mrs. Arthur T. Lyman, Jr.
Robert & Jane Morse
Gerri & Douglas Payne
Margaret E. Richardson
Robert & Bill Schnoor
Nancy B. Soulette
Robert F. Sproull
Caroline D. Standley
Marion Mackenzie Stegner
Mr. & Mrs. Daniel Steiner
Lucy B. Stroock
Joanne J. Turnbull
Ingeborg Uhlir
Daniel G. Wheeler
Mr. & Mrs. Holyoke L. Whitney

RIVER STEWARDS (\$500 - \$999)

Anonymous (1)
William T. Burgin
Marvin & Ann Collier
David S. Davenport
Mrs. Frederick B. Deknatel
Sarah C. Doering
Jerome & Emily Farnsworth
Richard S. Forte
Kenneth S. Frieze
John & Brenda Geishecker
Dr. Richard C. Gilman
Jennifer M. Huntington
Jonathan D. Katz
Elizabeth Levin
Mrs. Barbara M. Marshall
Andy & Linda McLane
Sara Molyneaux
Scott Nathan
Charles & Francene Rodgers

Dr. Marilyn & Mr. H. Jay Sarles
Joel L. Siner
Mr. & Mrs. Michael M. Tarnow
Sam Bass Warner, Jr.
Esther S. Yntema

RIVER ADVOCATES (\$250 - \$499)

Ralph W. Abele
Ramon L. Alonso
Susan Ashbrook
The Baker Family
Ms. Jane Bernstein
Lee P. Breckenridge
Janet & Booker Bush
Charles River Charitable Foundation
Charles Ezekiel & Jane Garfield
Cheever Fund
Mrs. George H. Clowes
Paul A. Cohen
Eric Cutler
Mr. & Mrs. Thomas Dooley
Horace W. Furumoto
Hank & Fran Grossman
Sanjay Gulati, MD
Lecia Harbison
Mr. & Mrs. Charles W. Hubbard, III
Allison Ryder & David Jones
Mr. & Mrs. Robert M. Knowles
Mr. & Mrs. George Lewis
Richard A. MacKinnon
Sharon & Brad Malt
Thomas & Emily McClintock
David S. McLellan
Marion L. Metcalf
Mr. & Mrs. John R. Moot
Keith F. Nemeskal
Brian O'Donovan
Joseph A. Bauer, Jr. & Mary Brown Parlee
Ellis L. Phillips, Jr.
Peter D. Phippen & April B. Bowling
Roger K. Pitman, M.D.
Timothy P. Sullivan
Albin Vaskas
Thomas B. Vawter
Mr. & Mrs. Bancroft R. Wheeler
Gerard Wolf
Molly S. Yowell

RIVER ASSOCIATE (\$100 - \$249)

Anonymous (1)
Susan W. Abbott
Mr. & Mrs. Frederick H. Abernathy
John C. Allis
Mr. & Mrs. Walter Amory

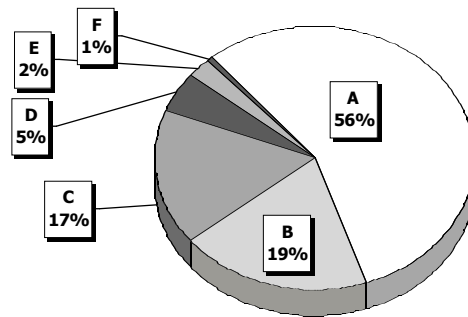
Mrs. Tia D. Andrew
Andrew Anway
Robert S. Armell
Mary Armstrong
Rodney Armstrong
Mr. Thomas J. Athanasas
Mary & Bruce Bailey
George P. Baker & Lauren Jennings
Jay Baldwin
Drs. John & Barbara Balsler
Fred Bamber
Sarah & Octo Barnett
Sue & Kit Barrow
Bill & Marilyn Baskin
Henry & Sue Bass
Marty Bauman
Richard I. Belkin
Edward Belove
Barry M. Berger
Walter E. Bezanson
Ms. Linda C. Black
Deborah Blacker & Alan Richardson
Peter Blumenthal
Kenneth S. Boger
Anne C. Booth
Thomas B. Boreiko
Kate Bowditch
Thomas B. Bracken
Jonathan Brandon
Clarita Heath Bright
Dr. William J. Brown, Jr.
BSC Group, Inc.
Mr. & Mrs. Lawrence I. Buell
William Bulkeley
Betsy & Frank Bunn
K. Burdon
Ann & Robert Buxbaum
Frederick C. Cabot
Charles C. Cabot, Jr.
Allan & Martha Campbell
Terry Campbell
Barrie & Joyce Candear
Lance O. Carleen
Terry & Sharon Carleton
Damon Carter, Jr.
Mr. & Mrs. Melville Chapin
Mr. Theodore Chase
Supriya Chaudhury
Ralph A. Child
Rachel & Tom Clafflin
Curtis Clark
John Clark
William Cleary, Jr.
Dr. & Mrs. Cecil H. Coggins
Mr. & Mrs. David S. Collins
Michael A. Collora & Clare O'Connell

Sylvia & John Constable
Jane C. Coolidge
William G. Coughlin
Eugene & Mary Covert
Anne Covert & Ed Cutler
Linda Cox
Michael J. Cronin
Brian C. Cuddy
Frederick B. Cunningham
Nancy & Jack Curtin
Thomas N. Dabney
Bill Dacier
Charles Dane
Susan Davies & Richard Talkov
Lisa & Peter DeRoeth
John DeVillars
Paul & Helen Dewey, Jr.
Richard & Kathy Diamond
Charles Dobbins
Mike & Jo Domenica
Amy Domini
Nancy & Don Dougherty
Frances B. Early
Mr. & Dr. David Eisenbud
Mary Eliot
Christian B. Elliot
Abigail Erdmann
Susan M. Erickson & Bruce Phillips
Charles F. Evans
Caroline & William Everts
Janet & Mark Fagan
Tom Farkas
William B. Farnsworth
Drs. Kate & Henry Faulkner
Mr. T. Lux Feininger
Mr. & Mrs. David J. Ferrari
Kristin K. Finn
Ralph Fiorillo
John & Martha Fiske
Charles & Mary Ann Fitzpatrick
Elliot Forbes
William J. Ford, Jr.
Charles H. W. Foster
Lisa Franklin
Dr. Joyce B. Friedman
Kenneth Galbraith
Paul G. Gardescu
Mr. & Mrs. Albert Gardetto
Robert Gehret
Genzyme Corporation
Robert German & Kate Severinsen
S. Peter Gibb
Celia Gilbert
Tom & Peggy Gilbert
Herbert Gleason
Boynton & Barbara Glidden
Mrs. John D. Glover

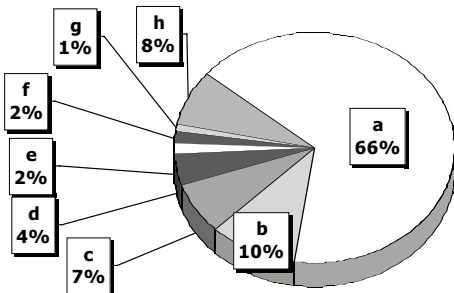
Peter Goldman
Diana, Richard, & Lily Gomberg
David Goodtree
Clarice & George Gordon
Jane & Bernard Gottschalk
Mr. & Mrs. John R. Gray
Mr. & Mrs. Morris Gray
Michael B. Grogan
Betsy Shure Gross
Amanda J. Gruber & Colin Angle
Guido Guidotti
Bayard & Kay Guild
Henry & Gale R. Guild
Susan Gulesian
Morris Halle
Mr. & Mrs. Samuel L. Hayes, III
Milton W. Heath, Jr.
George B. Heller
Peter Heller
Fred Hennie
John Heraty
John J. Herrman, Jr.
Jeff & Marcia Herrmann
Brian & Buffy Hickey
Walter G. Hiltz
George P. Hinchey & Paula Andrews
Joseph Hinsey, IV
Lynn & Bruce Holbein
R. Bradley Hollister & Kimberly Shanks
The Hootstein Family
Douglas Horst & Maureen Phillips
Bruce E. & Alice D. Houghton
Rob Hudson
Michael T. Huguenin
Mr. & Mrs. Willard P. Hunnewell
Jennifer M. Huntington
Dr. & Mrs. Adolph Hutter, Jr.
Charles Jackson, Jr.
Diane & Robert Jaye
Anna S. Jeffrey
Bruce E. Johnson
Mrs. T. Johnson, Jr.
James G. Kamitses
Peter & Pamela Kane
Cathy & Ken Kaplan
Michael Kauffman
Max & Bella Black Foundation
Mr. & Mrs. Francis T. Keally
Lucy & Dennis Keefe
T. Ross Kelly
Elizabeth C. Kent
Liza Ketchum & John Straus
Franklin King
William L. King
Katrina V. T. Kipp
Margot Kittredge
Ernest V. Klein

Revenue

A. Restricted Grants	\$698,322
B. Donations	\$242,528
C. Membership	\$207,987
D. Programs and Events	\$60,547
E. Donated Facilities	\$30,000
F. All Other	\$8,385
Total Revenue:	\$1,247,769



Expenses



a. Payroll Expenses	\$807,821
b. Contract Services	\$123,241
c. Printing & Supplies	\$90,139
d. Occupancy & Depreciation	\$51,970
e. Utilities & Telephone	\$19,150
f. Postage & Delivery	\$20,916
g. Equipment & Repairs	\$10,902
h. All Other	\$96,142
Total Expenses:	\$1,220,280
Net of Revenue and Expenses	\$27,489

Major Sources of Operating Funds

Government: \$96,807

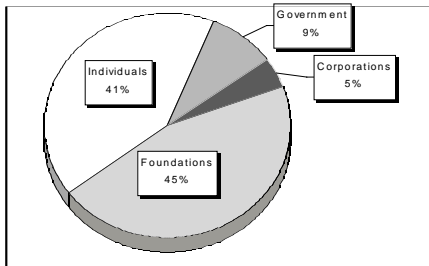
Boston Water and Sewer Commission
City of Cambridge Water Department
MA Dept. of Environmental Protection
Massachusetts Environmental Trust
Town of Bellingham
US Environmental Protection Agency

Corporations & Institutions: \$49,185

Boston Duck Tours
Boston University
Genzyme
Gillette
Harvard University
Lincoln Institute for Land Policy
Nantucket Nectars

Foundations: \$493,592

Anonymous (3)
Jessie B. Cox Charitable Trust
Crossroads Community Foundation
Island Foundation
Henry P. Kendall Foundation
Herman and Frieda L. Miller Foundation
The Harold Whitworth Pierce Charitable Trust
Richard Saltonstall Charitable Foundation



finances

*Did you know?
The generosity
of donors and
our members
makes up over
one third of
CRWA's yearly
revenue.*

giving



RIVER ASSOCIATE CONTINUED (\$100 - \$249)

Elizabeth B. Kloss
Richard W. Kohl
Richard S. Kronish
Trudy Lanman
John H. Lannon
John & Ann-Mara Lanza
Mrs. Edward Lawrence
R. Alan Lawson
Dr. Tamara Ledley
Douglas B. Lee
Mr. & Mrs. David S. Lee
Mr. Thomas A. Lehrer
R. Willis Leith, Jr.
Clare Walker Leslie
Mr. & Mrs. Edward C. Lingel, II
Peter Lloyd
Scott Loose
David E. Lurie
Jack Lyle
Henry Lyman
Mrs. Charles P. Lyman
Michael MacDonald
Edward MacNichol
John J. Madden
Joren & Lynn Madsen
Connaught & Gael Mahony
Jane A. Malatesta
Robert P. Malmberg
Gretchen Mamis
James E. Manson
Mr. & Mrs. Paul Marandett
Mr. & Mrs. Wesley W. Marple, Jr.
Danny Marques
Cindy Marshall
Gary R. Maus
Dr. & Mrs. Robert G. Mayer
Fran & Diane McCarthy
Gerald M. McCue
Robert E. McDonnell
Susan B. McGarvey
Richard G. McLaughry
George & Jane Metzger
Barbara Meyer & Michael Perloff
Sue Parsons & Neil Miller
Missionary Franciscan Sisters
Robert C. Mitchell
David Moir
Jean & Kyra Montagu
Tim Moore
Christopher Morss
Michael B. Moskow
Douglas Muir
Nancy & George Mumford
Helen B. Munzer
Anne K. Murray
Gary Nangle
New England Adventure Marketing
Newton Yacht Club, Inc.
George & Audrey Nichols
Mr. & Mrs. Philip T. Nicholson
Christopher Nolan
Peter Norstrand & Katherine S. Tallman
Mr. & Mrs. Richard Norton
Kathleen T. O'Connor
Elinor & Neil Olken
Joan M. Oustifine
Jennifer M. Paci
John G. Palfrey, Jr.
Jane & Cosmo Papa
Marylin A. Beck & William L. Pardee
Jeffrey R. Parenti
David & Shirley Parish
Esther G. Parker
Jeffrey D. Parker & Nancy Belkov
Roger A. Patkin
Gary & Cheryl Paul
Russell H. Peck
Katherine Perls
Rick Perras
John G. Petrasch
Phelps Industries, Inc.
Mr. & Mrs. Daniel Pierce
Patricia Pierce & Bradford Reich
Mr. & Mrs. John Plimpton
Caroline Polgar
William & Helen Pounds
Anne Lyman Powers
Tom Powers & Pat King
Christine Pratt
Mrs. Daphne B. Prout
Margot C. Pyle
Christopher S. Queen
Julie Quinn Mathisen
Richard & Marian Rainford
Helen & Peter Randolph
James A. Read, Jr.
Sally Reid & John Sigel
Thomas Reilly, Jr. & Elizabeth Palmer
Kenneth W. Rendell
Sally Reyring & Chris Baldwin
Charles & Maud Rheault, Jr.
Norma M. Ricci
Ann M. Riker
Steven A. Ringer
Sigmund Roos & Ruth Rohde
Peter & Femma Rosenbaum
Beth & Murry Ruben
Dr. & Mrs. David Rush
Saint Stephen Priory
Sylvia Sanchez
Ellen Sarkisian

Debra A. Schaumberg
Robert N. Schlauch
Philip Schneider
Benjamin Schore & Kira Fournier
Bruce & Grenelle Scott
Drs. Richard & Mary Scott
Susan Scott
Samir N. Semine
Jane Sender
Mrs. Freema Shapiro
Albina M. Shatzman
Jay G. Sheehan, P.E.
Dr. & Mrs. James Shepard
Mr. & Mrs. Ross Sherbrooke
Miss Helen Sherwin
Robert Skenderian
Christopher & Martha Smick
Adrienne Smith
Edward J. Smith, Jr.
Stephen W. Smith
Kurt F. Somerville
Jane R. Soukup
Mrs. Augustus W. Soule, Jr.
Alan D. Spatrick
George & Lee Sprague
Robert F. Sproull
Dr. & Mrs. Walter St. Goar
Howard S. Stein
Margaret Ellis Steiner
Brooke Stevens & Thomas McCorkle
William & Joanne Stevenson
Margery P. Stoddart
Margaret W. Stubbs
Jane Sulkin & Steve Kolhami
Mrs. Cynthia H. Sunderland
Mrs. William H. Sweet
Donald J. Swire
Gerald Swislow
Richard D. Tabors
Toshi Takenouchi
Mrs. Anne P. Talbot
Steven & Wendy Tannenbaum
Jon & Alice Taylor
Patricia Terrell
John & Kathleen Thomas
Josh Tolkoff
State Rep. Tim Toomey
Denise Benoit & George Touchstone
Robert & Naomi Tuchmann
John W. Tuckerman
Patrick & Mary Ann Tynan
Roger Urell
Detlev F. & Dorothy Vagts
Paul Van Broekhoven
Lillian B. Vash Family Fund
Herbert W. Vaughan
Dinah Vischer-Buechner
Renata von Tscherner
Sheldon & Denisa Wagner
Mr. William H. Wainwright
Sally Mapp Walker
Richard Walsh
Edward E. Watts, III
Ms. Patricia B. Weiler
Suzanne Weinstein
Rebecca Weiss
Dr. & Mrs. Thomas H. Weller
Peter F. Weller
Dwight Gertz & Virginia Welles
Russell S. Werner
Peter T. Wheeler
John-Eric White
Robert E. White
Robert T. Whitman & Jeffrey H. Mungler
Russell W. Wiggin
Glen R. Williamson
Doris Wilson
Prof. & Mrs. Donald J. Winslow
Mr. & Mrs. Peter K. Wirth
Thomas Wirth Associates, Inc.
Joan G. Wislocki
Mary F. Wolfson
Elizabeth & Richard Wood
Nancy & Fred Woods
Mr. & Mrs. John M. Woolsey, Jr.
Sara L. Wragge
W. Heinrich Wurm
Joan Blout Wylie
Mead, Ann & Dudley Wyman
Marillyn A. Zacharis
Robert G. & Pat Ziegler
Robin L. Zucker

IN HONOR OF
Julie Kirklin and Jim Scott
Kelly McClintock

IN MEMORIUM
Kate C. Moore

CORPORATIONS (\$500 OR MORE)
Boston Duck Tours
Boston Sand & Gravel Co.
C&R Management Corp.
Compaq Computer Corporation
Genzyme Corporation
Gillette Company
Ionics Inc.
Nantucket Nectars
Philip Morris Companies, Inc.
Rock Bottom Restaurants, Inc.
Sun Life Assurance Company of Canada

Triumvirate Environmental, Inc.
ORGANIZATIONS & INSTITUTIONS (\$500 OR MORE)
Beacon Hill Garden Club
Boston University
Boston Water & Sewer Commission
Earth Share
Harvard University
Head of the Charles Regatta
Union Boat Club

FOUNDATION GRANTS (\$500 OR MORE)
Anonymous (1)
The Paul and Edith Babson Foundation
Jessie B. Cox Charitable Trust
Crossroads Community Foundation
Field Parker Fund
Gunst Charitable Foundation
Hitachi Computer Products, Inc.
Kahn Charitable Foundation
Lincoln Institute of Land Policy
Herman and Frieda L. Miller Foundation
The Harold Whitworth Pierce Charitable Trust
Richard Saltonstall Charitable Foundation

CORPORATE MATCHING GIFTS
Art Technology Group
Atlas Venture Advisors, Inc.
Compaq Computer Corporation
Fleet Boston Financial Corporation
Houghton Mifflin Company
John Hancock Mutual Life Insurance Company
KeySpan Corporation
Microsoft Corporation
Pacific Gas & Electric
Perkins Charitable Foundation
Polaroid Fund, Boston Foundation
Sun Microsystems
Tabors Caramanis & Associates
United Technologies
Verizon Communications

IN-KIND CONTRIBUTIONS
American Whitewater
Appalachian Mountain Club
Bim Skala Bim
Boston Duck Tours
Boston Pretzel Bakery
Boston Ski & Sport's Club
Boston University
Bread & Circus
Canoe & Kayak Magazine
Central Congregational Church, Newton
Charles Riverboat Co.
Chota Outdoor Gear
Community Newspaper Co.
DiAngelo's Submarine Shops
Dunkin Donuts
Bonnie & Jay Emmons
Eric Endlich
Figi Water
Finagle a Bagel
Frito-Lay
Green Mountain Coffee Roasters
Halfway Café
Harvard University
Home Depot
Ice Mountain Water
John Harvard Brewery
Lasell College
Marriott Hotel - Newton
Mass Bay Line
MA College of Art student,
Jonathan Richard
Metropolitan District Commission
Michael Hutto
Mountain Surf
Nantucket Nectars
Nature Springs Water Co.
Nature Valley Granola Bars
Necky Kayak
New England Aquarium
Paratore Hartshorn design, Inc.
Patagonia
Pepsi
Rebecca's Café
REI
Rock Bottom Restaurant
Stop & Shop Supermarkets, Co.
Sunbelt Granola Bars
The Bag Lady
The New New Orleans Jazz Band
Triumvirate Environmental
Veryfine
Zaverl

VOLUNTEERS WATER QUALITY MONITORING
Jessica Adema
Liz Adler
Craig Austin
Marg Balcom
Michael Balcom
Paul Barden
Tim Bauley
Kathy Button

John Carney
Damon Carter
Joan Christenson
John C. Clark, Jr.
Charles Collins
Erick Cooke
Lisa Core
Tom Darling
Jillian Darling
Roberta Demers
Kathy Diamond
Ronnie Durand
Katie Egan
Dr. Michael F. Epstein
Reed Estabrook, Jr.
Earl Fahey
Tim Fulham
Bill Goodwin
Meg Gray
Stephen Green
Fran Grossman
Hank Grossman
Nancy Hammett
Gail Hansche
Judith Hanson
Gaby Harrison
Elizabeth Homa
Deborah Howe
Chris Hubbard
Regen Jamieson
Kate Jesdale
Tom Jones
Liza Ketchum
Bill King
Peggy Knowlton
Linda Konvalinka
Ernesta Krazckiewicz
Andrea Langhauser
Jim Lochiatto
Kennie Lyman
Hank Lysaght
Dorothy Mandigo
John Mandigo
Mary Maresca
Micah McOwen
Barbara Meyer
Brett Niver
Rosemary O'Brien
Mark O'Leary
Paul Pantazi
Janet Persechino
Jane Walker Pfister
Martha Phillippo
Jaime Phillippo
Scott Phillippo
David Phillippo
Ann Marie Pilch
Jessica Pisano
Susan Plume
Pat Polimeno
Susan Redlich
Andrew Reed
Frank Reitter
Gail Reitter
Dianne Rice
Dennis Rufolo
Barbara Ruskin
Paul Sackley
Michael Sanders
Bob Schlauch
Amy Schlauch
John Sherwood
Norm Sieman
Geraldine Somers
Ann Speers
Sandy Starr
Bill Tedoldi
John Thurston
Jim Trudeau
Joan Wislocki
Pierre Wolfe

WATER QUALITY FLAGGING
Boston Water & Sewer Commission
John P. Sullivan, P.E.
Charles River Canoe & Kayak
Ralph Boynton
Community Rowing, Inc.
Alyson Magian, Martha Laugen
Harvard University Crew
Dan Boyne
MIT Crew
Gordon Hamilton, Jim Straccamora, John Pratt, Tom Keefer
MIT Sailing
Brian Foti
Newton Yacht Club
Roger Baudreau, Nelson Stevens
Northeastern University Crew
Rick Schroeder
Riverside Boat Club
Maura Conron
Union Boat Club
Aleks Zosuls

PROJECT ASSISTANCE
James Chen
Dave Coles
Loretta Fernandez
Roger Frymire
Marc Gilmore
Billie Gould
Kerri Glynn

Muhammad Manirul Islam
Lindsay Madeira
Nelson Mercado
Jennifer Morin
Karen Fung
Shengwen Su

STREAM TEAMS
Andrew M. Adinolfi
Frederick C. Cabot
Damon Carter, Jr.
Nina Danforth
Roberta J. Demers
Emily Hoefel
Kevin Hollenbeck
Milton Landowne
Hank Lysaght
David Miller
Ari Ofsevit
Bob Pollock
Bonnie Potocki
Norm Richardson
Norman A. Sieman
William J. Tedoldi

RUN OF THE CHARLES
Brad Anselmo
John Antes
Jeff Arnold
Arthur Ashley
Tommy Bannon
Alison Bassett
Scott Berger
Chavon Bernard
Dennis Bernhardt
Will Bledsoe
Ron Bloch
Lynn Bratley
Kathleen Brown
Cliff Brown
Edward Burg
Michelle Burke
Larry Cabot
Mike Cadman
Adam Cardinal
Melissa Cicaloni
Janis Clifford
Clayton Coleman
Clare Collora
Michael Collora
John Cronin
Renaud Cyr
Jeff Daly
Tom Darling
Bobbie Demers
Chuck Dickinson
Alexa Dougherty
Mark Duff
Earl Fahey
Andrew Farrer
David Farrer
Melissa Foye
Chris Fusco
Lori Gershaw
Jane Gookin
Syl Gookin
Fran Grossman
Hank Grossman
Neil Grossman
Christine Harrington
Karen Hill
Dave Hunt
Stewart Johnson
Kate Jurow
Kris Kelley
Kevin Kierim
Vijay Kumar
Beedee Ladd
Anne Leonard
Hank Lysaght
Tim Lysaght
Buff Madison
Helen Madison
Pam Marascia
Gary McCabe
Liz Muldowney
Margaret O'Donnell
Anna Pavalova
Ed Payne
Mastin Pine
Tony Putz
Trudy Reen
Dennis Rufolo
Laurie Schlatter
Harriet Sesen
Henry Stoltman
Charles Suprin
Robert Tocchi
Stephanie Tocchi
Murray Tuchman
Bruce Usinowicz
Allan White
Bob White
Karen White
Curtis Whitney
Diane Xenelis
Brian Yates
Molly Yowell
Blanca Zaucher
Robin Zucker



Graphics:

Icy Branches Eric Endlich
Kelly and Bob Anna Eleria
Watershed Map Dudley Bonsal
Staff photos Anna Eleria

Printed by Recycled Paper Printing

CRWA is a tax-exempt, nonprofit corporation established in 1965 to protect and enhance the health, beauty and enjoyment of the Charles River and its tributaries.

CRWA is a member of Earth Share and the Massachusetts Environmental Collaborative.

CHARLES RIVER WATERSHED ASSOCIATION
2391 Commonwealth Ave
Auburndale, MA 02466
phone: (617) 965-5975
fax: (617) 332-7465
crwa@crwa.org
www.charlesriver.org

Printed on recycled paper

